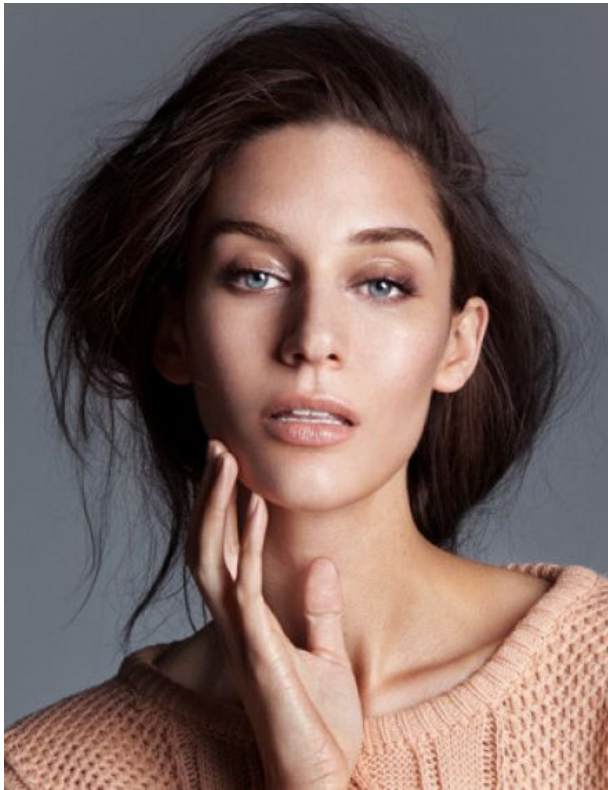


BUST 35" DRESS 2-4 US / 6-8 UK / 34-36 EU HEIGHT 5' 10" HIP 35" SHOE 9 WAIST 24" HAIR BROWN EYES BLUE











Down the Rabbit Hole

PHOTOGRAPHY: CODY RASMUSSEN
ART DIRECTION & STYLING: REESE HERROCK
HAIR: ANDREW GARDNER / MONTAGNA
MAKEUP: SARAH GARDNER / MONTAGNA

040

041

The graphic is split into two vertical panels. The left panel has a dark grey background with a large, bright red 'X' that spans across both panels. Below the 'X' on the left is a white oval shape, resembling a hole in the ground. The right panel shows a woman from the waist up, wearing a bunny ear headband, a denim crop top with a red heart, and denim shorts. She is also wearing blue knee-high socks and brown shoes. The background is a plain, light grey.

