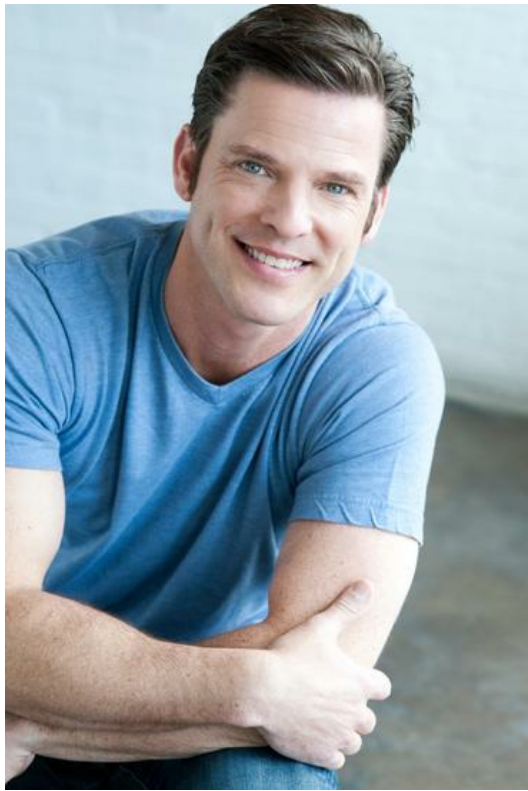


HEIGHT **6' 0"** SUIT **42** COLLAR **17"** SLEEVE **34"** WAIST **33"** INSEAM **34"** SHOE **11** HAIR **BROWN** EYES **BLUE**







StarLite FOAMPRO

Because foam eyewear should fit your workplace... and your face.

Dusty workplace? Fierce fogging? Meet the StarLite® FOAM Series. The new StarLite® FOAMPRO™ takes protection to a new level, with OptiFit™ foam technology. This unique, closed-cell foam lines the entire lens, with a tapered design that provides a better fit and improved seal around the eyes.

OptiFit foam was developed to meet the needs of varying facial profiles, reducing gaps with its graduated foam design. Plus, venting helps fight fogging. Not locking in fog. FOAMPRO features a light gray foam instead of a stark black to avoid that 'lacoon eye' look!

For another foam option, the original StarLite® FOAM is lined just along the top and sides of the lens. It's an ideal product for drywalkers, or anyone working around falling dust and debris.

Both products provide all the benefits of the original, industry-leading StarLite safety glasses, including UL-certified impact protection. Plus, all lens options come with our high-quality anti-fog coating, making them exceptional products to fight fog. StarLite® FOAMPRO is even available in a MAG version, with 1.5 and 2.0 diopters!

Even a small particle blown into the eye can cause significant damage. Between StarLite® FOAM and StarLite® FOAMPRO, workers can find foamed eye protection — in the famous StarLite design — that they can count on.





John Risner

HT:
6'1"

Suit:
42

Shirt:
16.5

Waist:
31

Inseam:
34

Shoe:
10

Hair:
Brown

Eyes:
Blue

john risner



DOHERTY
2044 EUCLID AVE AVENUE
SUITE 200
CLEVELAND, OH 44115
216.522.1300